

# Repairing process of the Kumamoto castle towers



Aug. 2016



Apr. 2017

**Foundation of the castle towers were not stone walls but reinforced concrete columns!**



Jul. 2018

# Corner tower named Iida-Maru



Before the earthquake



Just after the earthquake, May 2016

This building became very famous because it kept standing against the earthquake with a line of corner stones.



Corner stone like a column

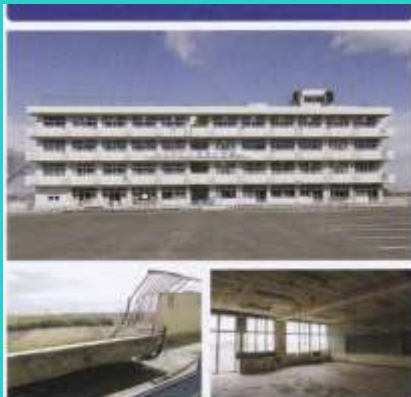


Aug. 2016



Jul. 2018

# Sendai after seven years and a half since the 3.11 tsunami disaster



震災遺構  
仙台市立荒浜小学校  
Parts of the Great East Japan Earthquake  
Sendai Arahama Elementary School



Visit : Sep. 3 - 6, 2018

# Arahama primary school as a remain of 3.11 tsunami disaster

## 震災遺構 荒浜小学校



「失われた街」模型復元プロジェクトによる『記憶の街ワークショップin荒浜』完成模型

津波襲来までの経過を示すパネル展示

Residents have lost their home town completely, but they have just started to remind their memories.

# Nothing remained in the Arahama beach, Sendai



## 荒浜の海岸



失われた松林と防潮堤

# Residents are coming back little by little into their Yuriage town, Natori city



## 復興途上の関上地区



# Yuriage town is on the half-way of reconstruction



慰霊塔と笹かまぼこ工場の佐々直 日和山



被災前の関上



高上げ上の復興住宅



日和山から見た内陸の復興住宅



関上港の漁船



名取市バスなとりん号



名取市サポートセンターに併設された「関上サロン」